

**Appearance & Shape:** To be free from any defect such as flow, burrs, unevenness etc, As per IEC standards.

**Effective Parameters irrespective of material grade (per piece)**

- Effective Length ( $L_e$ ): 37.3 mm
- Effective Area ( $A_e$ ): 78.1mm<sup>2</sup>
- Effective Area ( $A_{Min}$ ): 78.1mm<sup>2</sup>
- Effective Volume ( $V_e$ ): 2913mm<sup>3</sup>

**Approximate weight : 14.0g/pc**



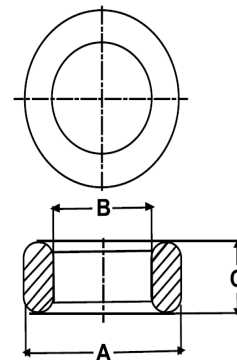
## T1528 OL (Un- Coated)

**Test Conditions: 10kHz/150mV/CFR COIL,N=01/Lo=Zero/25°C**

Material Grade	Initial Permeability ( $\mu_{iac}$ )	AL Value (nH)	Ordering code
CF196	2000 $\pm$ 20%	5300+30%/-20%	CF196T1528
CF139	2100 $\pm$ 20%	5500+30%/-20%	CF139T1528
CF130	3000 $\pm$ 20%	7900+30%/-20%	CF130T1528
CF195A	5000 $\pm$ 20%	13100+30%/-20%	CF195AT1528
CF265	5000 $\pm$ 20%	13100+30%/-20%	CF265T1528
CF190	6000 $\pm$ 20%	15800+30%/-20%	CF190T1528
CF197	7000 $\pm$ 20%	18400+30%/-20%	CF197T1528
CF199	9000 $\pm$ 20%	23700 $\pm$ 30%	CF199T1528

## Dimensions(Un-coated Core)

Dimension	Nominal (in mm)	Maximum (in mm)	Minimum (in mm)
A	15.15	15.65	14.65
B	9.5	9.9	9.1
C	28.15	28.55	27.75



For general terms and conditions please visit: [http://www.cosmoferrites.com/Downloads/Downloads/bcb70e7c-ae33-40ec-a881-0d5120db57b6\\_GTC.pdf](http://www.cosmoferrites.com/Downloads/Downloads/bcb70e7c-ae33-40ec-a881-0d5120db57b6_GTC.pdf)

**Regd. Office & Works:** Jabli, Distt. Solan, Himachal Pradesh – 173 209 (India)

Tel: +91 1792 277231/32/36, Fax: +91 1792 277234

E-mail: sales@cosmoferrites.com