

Appearance & Shape: To be free from any defect such as flow, burrs, unevenness etc, As per IEC standards.

Effective Parameters irrespective of material grade (per piece)

- Effective Length (L_e): 34.8 mm
- Effective Area (A_e): 42.3mm²
- Effective Area (A_{Min}): 42.3mm²
- Effective Volume (V_e): 1472mm³

Approximate weight : 7.2g/pc



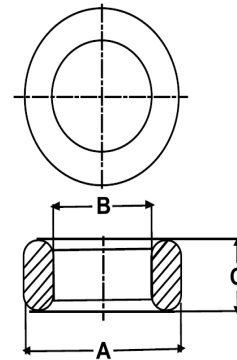
T1611 OL (Un- Coated)

Test Conditions: 10kHz/150mV/CFR COIL,N=01/Lo=Zero/25°C

| Material Grade | Initial Permeability (μ_{iac}) | AL Value (nH) | Ordering code |
|----------------|--------------------------------------|----------------|---------------|
| CF196 | 2000 ±20% | 3050+30%/-20% | CF196T1611 |
| CF139 | 2100 ±20% | 3200+30%/-20% | CF139T1611 |
| CF130 | 3000 ±20% | 4600+30%/-20% | CF130T1611 |
| CF195A | 5000 ±20% | 7600+30%/-20% | CF195AT1611 |
| CF265 | 5000 ±20% | 7600+30%/-20% | CF265T1611 |
| CF190 | 6000 ±20% | 9100+30%/-20% | CF190T1611 |
| CF197 | 7000 ±20% | 10700+30%/-20% | CF197T1611 |
| CF199 | 9000 ±20% | 13700 ±30% | CF199T1611 |

Dimensions(Un-coated Core)

| Dimension | Nominal (in mm) | Maximum (in mm) | Minimum (in mm) |
|-----------|-----------------|-----------------|-----------------|
| A | 16.0 | 16.5 | 15.5 |
| B | 8.0 | 8.4 | 7.6 |
| C | 11.0 | 11.4 | 10.6 |



For general terms and conditions please visit: http://www.cosmoferrites.com/Downloads/Downloads/bcb70e7c-ae33-40ec-a881-0d5120db57b6_GTC.pdf