

Appearance & Shape: To be free from any defect such as flow, burrs, unevenness etc, As per IEC standards.

Effective Parameters irrespective of material grade (per set)

- Effective Length (L_e): 52.1mm
- Effective Area (A_e): 32.3mm²
- Effective Area (A_{Min}): 31.8mm²
- Effective Volume (V_e): 1683mm³

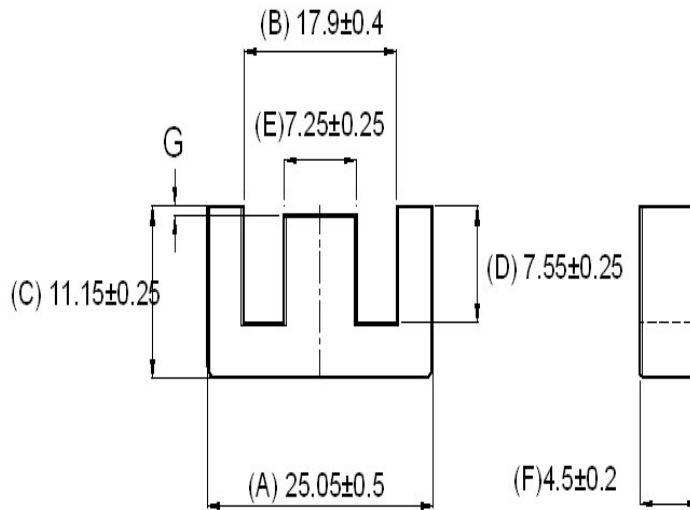
Approximate weight : 8.5g/Set



EE2504 Un-gapped (OL)

Test Conditions: 1kHz/1mT/CFR COIL,N=100/25°C

Material Grade	Initial Permeability (μ_{iac})	AL Value (nH)	P_v (W/set)	Ordering code
CF196	2000 \pm 20%	1300 +30%/-20%	≤ 0.23 (200mT,16kHz,100°C)	CF196EE2504 OL
CF139	2100 \pm 20%	1350 +30%/-20%	≤ 0.17 (100mT,100kHz,100°C)	CF139EE2504 OL
CF297	2300 \pm 20%	1500 +30%/-20%	≤ 0.15 (100mT,100kHz,100°C)	CF297EE2504 OL
CF130	3000 \pm 20%	1800 +30%/-20%	≤ 0.22 (200mT,16kHz,100°C)	CF130EE2504 OL
CF195	5000 \pm 20%	2600 +30%/-20%	NA	CF195EE2504 OL



Remarks: Value of "G" is Zero (0) for Un-Gapped Cores, for Gapped Cores the value of "G" varies as per the Gap/AL value

For general terms and conditions please visit: http://www.cosmoferrites.com/Downloads/Downloads/bcb70e7c-ae33-40ec-a881-0d5120db57b6_GTC.pdf