

Appearance & Shape: To be free from any defect such as flow, burrs, unevenness etc, As per IEC standards.

Effective Parameters irrespective of material grade (per piece)

- Effective Length (L_e): 38.5 mm
 - Effective Area (A_e): 22.0mm²
 - Effective Area (A_{Min}): 22.0mm²
 - Effective Volume (V_e): 847mm³
- Approximate weight : 4.5g/pc**



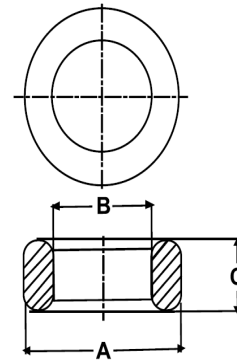
T1607 OL (Un- Coated)

Test Conditions: 10kHz/150mV/CFR COIL,N=01/Lo=Zero/25°C

Material Grade	Initial Permeability (μ_{iac})	AL Value (nH)	Ordering code
CF196	2000 ±20%	1400+30%/-20%	CF196T1607
CF139	2100 ±20%	1500+30%/-20%	CF139T1607
CF130	3000 ±20%	2150+30%/-20%	CF130T1607
CF195A	5000 ±20%	3600+30%/-20%	CF195AT1607
CF265	5000 ±20%	3600+30%/-20%	CF265T1607
CF190	6000 ±20%	4300+30%/-20%	CF190T1607
CF197	7000 ±20%	5000+30%/-20%	CF197T1607
CF199	9000 ±20%	6450 ±30%	CF199T1607

Dimensions(Un-coated Core)

Dimension	Nominal (in mm)	Maximum (in mm)	Minimum (in mm)
A	16.0	16.4	15.6
B	9.6	9.9	9.3
C	7.0	7.2	6.8



For general terms and conditions please visit: http://www.cosmoferrites.com/Downloads/Downloads/bcb70e7c-ae33-40ec-a881-0d5120db57b6_GTC.pdf